

Borehole logging from 0 - 2000 m

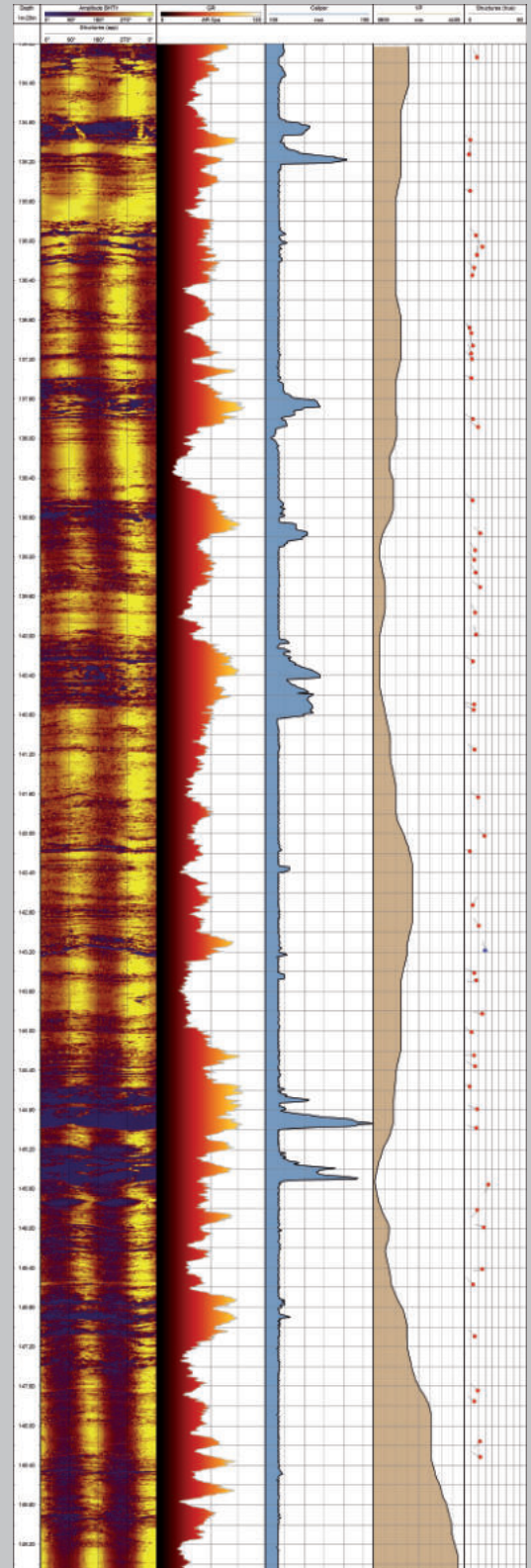
terratec offers the following borehole geophysical measurements:

- Optical borehole scanner (OPTV)
- Acoustic televiewer (BHTV)
- Flowmeter (fluid logging)
- Wireline water sampling at particular depth
- Fluid temperature and conductivity
- Caliper
- Natural gamma ray (total count)
- Uranium grade
- Spectral gamma ray
- Sonic (FWS, CBL)
- Borehole deviation (magnetic and gyro)
- Total magnetic field (Hx, Hy, Hz)
- Resistivity and IP
- Dual induction rock conductivity
- Borehole EM (Digi-Atlantis, Geonics BH43-3B)
- Video inspection

Others on request...



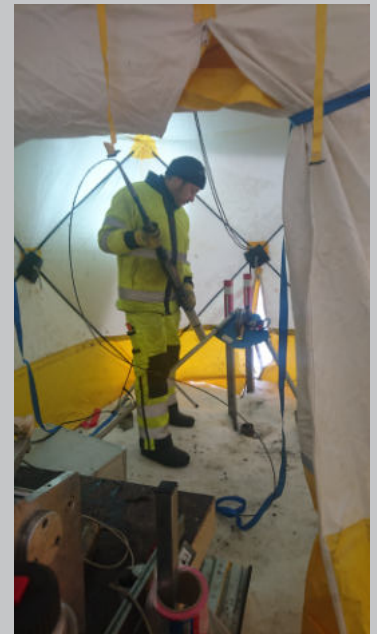
Borehole logging, Mauritania



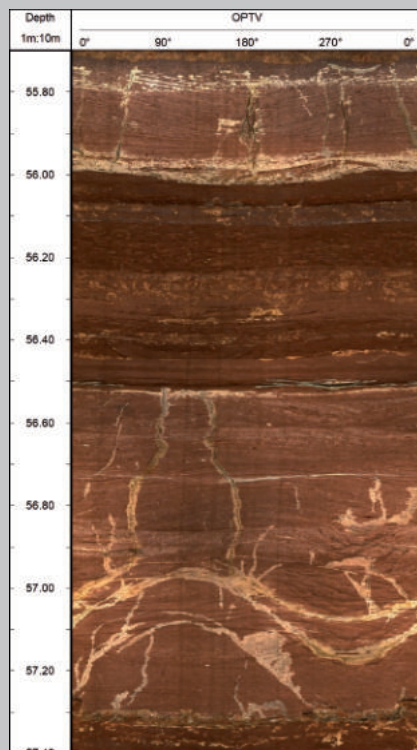
Optical Borehole Scanner (OPTV)

Capabilities of the Optical Scanner include:

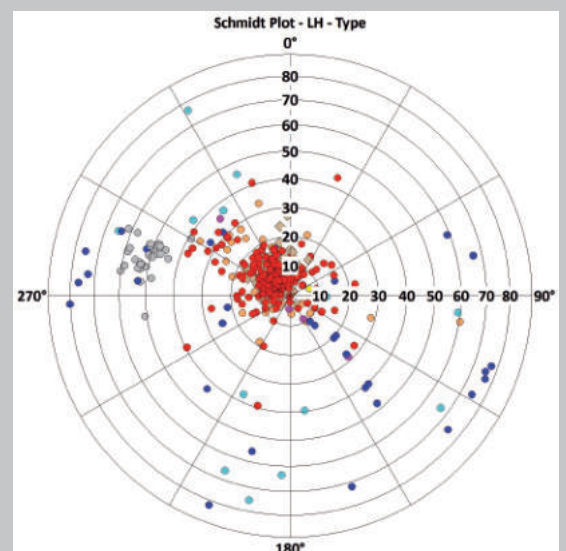
- Continuous, detailed and scaled 360° true-colour images of the borehole walls for documentation and interpretation (see fig. on the right)
- Feature analysis including dip, strike, frequency, and fracture aperture
- A popular visual data display option is the projection of features onto an imaginary
- Replacement of expensive coring with its associated problems of incomplete core recovery
- Borehole deviation log (dip and dip direction) to calculate the true borehole coordinates x, y, z for the production of bulls-eye diagrams, etc.
- Total magnetic field strength and magnetic field vector information
- Natural gamma ray information
- 150 m scan within 1 hour with a vertical resolution of 1mm
- Over 19 years of experience in Africa, Europe and America
- Surface and underground, vertical and horizontal, core and RC drill holes
- Portable and vehicle mounted operation



Borehole logging, northern Finland



The image shows the circumference of the borehole developed on a plane. The left and right borders of the image correspond to north (0° or 360° respectively); the middle of the image corresponds to south (180°). A structure analysis of the images is possible and the resulting polar projections show the dip direction and dip of the structures for example in a Schmidt Net.



Schmidt Net, pole points, lower hemisphere

Contact:



Borehole logging, rock laboratory

terratec geophysical services GmbH & Co. KG
Germany, Heitersheim, +49 (0) 7634 50319 0

terratec Bulgaria OOD
Bulgaria, Pernik, +359 (0) 76 588 786

terratec Mali SARL
Mali, Bamako, +223 (0) 66 928443

terratec geophysical services Namibia CC
Namibia, Windhoek, +264 (0) 61 225292

